

**Transform Your Design Team
with Powerful eLearning**

Boost productivity
with IMAGINiT
learning products!



cadalyst
IMAGINiT
TECHNOLOGIES

cadalyst

Navigate the world of design technology



CAD Manager's Newsletter

STRATEGIES AND SOLUTIONS FOR THE REAL WORLD

By Robert Green

August 23, 2023
Issue #515

To All Users — From Your CAD Manager

An open letter to your users can help them understand how your job is to help them succeed and, in turn, make your company more profitable.

CAD Managers have a unique job in that we must serve two key contingencies — senior management (who funds our budget and wants everything done inexpensively) and users (who want to get their work done with minimum hassle). Obviously, CAD managers must all explain ourselves to senior management to get the resources required to do our job, but unfortunately many of us fail to explain our job to the users we must serve. I've found that my job is far easier when I take the time to explain my job and the limits I operate within.

In this edition of *The CAD Manager's Newsletter*, I'm updating my time-tested tips and tricks for building understanding with your users via an open letter. Feel free to use this as a template and edit it to suit your own needs. Here goes.



Image source: [alotofpeople/stock.adobe.com](https://www.adobe.com/stock/alotofpeople/).

To All CAD Users,

Hello everyone. This is **<your name here>**, your CAD/BIM manager. I know many of you don't know exactly what I do, so you may not realize how much I can help you get your work done while making the company's projects more profitable. I'm also aware of how much things have changed since COVID, with more of us working remotely on new cloud-based tools than ever before. I'm hoping this letter can serve as a reboot for how we can all work together to make our CAD environment as productive as possible.

What My Job Includes

One thing I'm asked often is, "What does a CAD/BIM manager do?" Well, first, I must follow the directives given to me by our senior management team. You may notice some of these directives showing up in your CAD environment, but you may not know why. Let me give a short run down:

Supporting projects. No matter what else I do, management has made it very clear that my number one responsibility is to keep projects on track by supporting CAD users and tools. Therefore I make sure files are managed, PDFs captured, renderings produced, and client transmittals are in order. These will always take priority over anything else.

Keep CAD software and hardware running. This means installing and supporting the software you use while making sure that I coordinate with IT on network issues and keeping up with the printers and plotters we all use every day. I may be debugging software deployments in the morning, debugging a plotter at lunch, dealing with file security issues via IT in the afternoon, or deploying new laptops all while fielding numerous support calls (see topic above).

Standardizing and optimizing CAD operations. This means trying to get everyone on project teams to work cooperatively so that the work is completed quickly, with minimal time spent, and the fewest mistakes possible. When I focus on standards and getting everyone to work in a consistent manner, it isn't just because I want to, it is because I'm expected to and it saves time in the end.

Working with IT to secure data. As cloud software becomes more prevalent, concerns about data security have only increased and IT has had to become more disciplined about how they manage CAD tools. Please know that better security, strong passwords, and more attention paid to the threats of malware and data theft will continue to impact all of us.

Keeping CAD costs down. Our management wants to be sure that we keep our budgets under control, so I'm expected to purchase only the software we really need, squeeze more years from older workstations, and minimize the cost of

training. If you don't have all the software you might want, a brand-new workstation, or unlimited training, please know that cost containment is the reason why. If you think about how much all those items would cost for every single CAD user in the company, you can see why management is concerned, right?

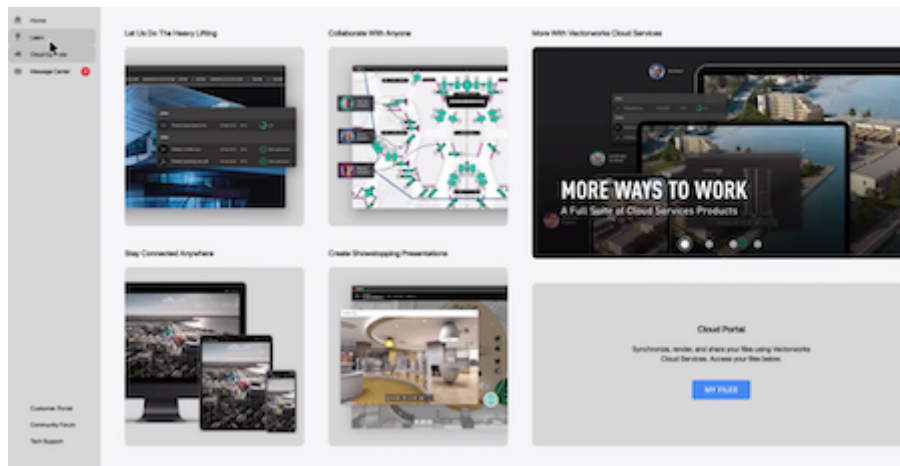
It is sometimes stressful to have all these responsibilities while trying to support everybody working on such a wide variety of ongoing projects. If it ever seems like I don't have enough time to spend with you on training or talking about new technology, just understand that I have limited hours in a day and that those hours must be focused on project execution.

Another question I'm often asked by management is, "How can we do things better, faster, and cheaper?" This is where we all come together to get our work done to the best of our abilities. But to do so, we must cooperate and communicate, find out how!

Robert Green offers these tips!

[READ MORE >>](#)

Tools & Resources



Product Watch: Vectorworks 2024

Vectorworks, Inc., will soon release its 2024 version of its flagship program. The upcoming version includes Vectorworks Architect, Landmark, Spotlight, Design Suite and Fundamentals, along with 2024 versions of ConnectCAD, Braceworks and Vision. Company CEO Dr Biplab Sarkar states that, "Vectorworks 2024 represents a significant move forward in integrating our tools into specific design workflows. By taking a holistic and high-level approach, we work hard to ensure that our software aligns seamlessly with the natural processes of designers. From ideation to final execution, this latest version has been carefully crafted to ensure new tools and existing features work together harmoniously to diminish disruptions and enhance productivity." New features to watch for include an updated interface, rebuilt Project Sharing, and more. [Learn more >>](#)

Cloud Option: IMAGINiT Clarity Cloud

IMAGINiT Technologies recently launched a hybrid option for IMAGINiT Clarity Cloud. This latest Clarity offering enables users to split the automation of tasks for Autodesk Revit and Autodesk AutoCAD projects between cloud and on-premise workstations. The IT management of the hybrid requirements are integrated into

existing cloud services. The product is a fully hosted BIM automation platform that automates repetitive Revit, AutoCAD and BIM 360 tasks. For example, it can: schedule tasks to run automatically, export views and sheets to multiple formats, perform eTransmit to get files ready to leave BIM360, and publish and move files in BIM360. [Learn more >>](#)

Conference: AGI GeoCom 23

5 December 2023, GeoCom 23, London. The Association for Geographic Information (AGI) conference topic is *Intelligent Geospatial for a Sustainable Future*. GeoCom brings thought leaders together to inspire and spark debate with an engaged audience supporting the AGI's mission to create a thriving geospatial community with a sustainable future. [Find out more >>](#)



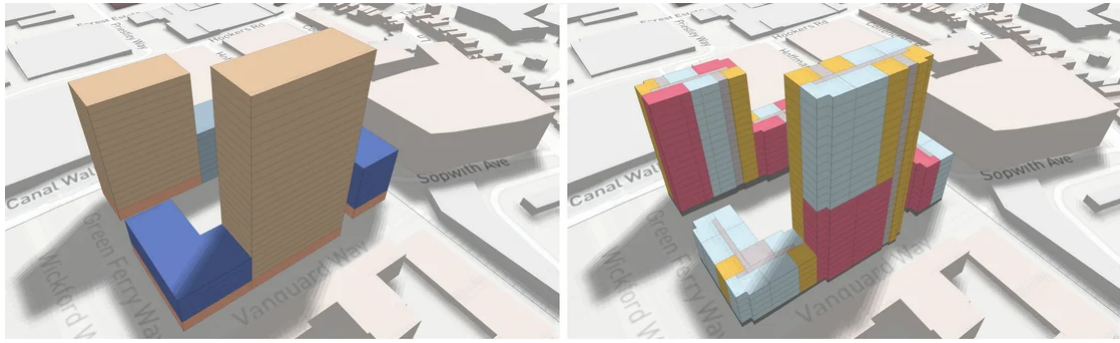
Product Watch: HP's Z4 Rack G5 Workstation

HP announced the new HP Z4 Rack G5, a 1U rack workstation that offers the flexibility needed to deliver high-quality, high-performance computing from wherever workers sit, according to the company. HP Z4 Rack G5 features up to 24 cores in an Intel Xeon W-2400 CPU, support for NVIDIA RTX 6000 Ada Generation graphics, and up to 256 GB DDR5 memory, all with room to upgrade and expand, plus more. With the option of HP Anyware, teams can access the power of the Z4 Rack from any device, delivering fast responsiveness and image quality, even under varying network connections, according to the company. NVIDIA RTX Ada Generation GPUs offer graphics memory with error-correcting code (ECC) for rendering, data science, and engineering simulation. The fourth-generation Tensor Cores provide up to 5X the model training performance and up to 5X the inference performance of the previous-generation NVIDIA Ampere architecture for faster generative AI content creation, according to HP. [Learn More >>](#)

Product Watch: Graphics Cards

AMD announced two new additions to the AMD Radeon PRO W7000 Series graphics product line: the AMD Radeon PRO W7600 and AMD Radeon PRO W7500 workstation graphics cards. The new cards leverage AMD RDNA 3 technology and feature 8GB of high-speed GDDR6 memory to support data-intensive tasks and enable raytraced renderings the cards offer a number of key features, including: AMD RDNA 3 architecture, dedicated AI acceleration, AMD Radiance Display Engine with DisplayPort 2.1, and Optimized Driver Performance and Professional Application Certification, according to AMD. The AMD Radeon PRO W7600 and AMD Radeon PRO W7500 will be available in Q3 2023 for \$599 USD and \$429, respectively. Product availability in OEM workstations and SI systems is expected later this year. [Read more >>](#)

What's New at Cadalyst



AEC Solutions: Automating Conceptual Design on AEC Projects

New tool offers ways to accelerate building design processes right from the beginning during the conceptual design phase. *By Andrew G. Roe*

[Read more >>](#)



VIEWPOINT: Upping Your Game: Leadership in the Age of AI

Find out from Bentley Systems' Claire Rutkowski how to build resilience for yourself and your team. *By Claire Rutkowski*

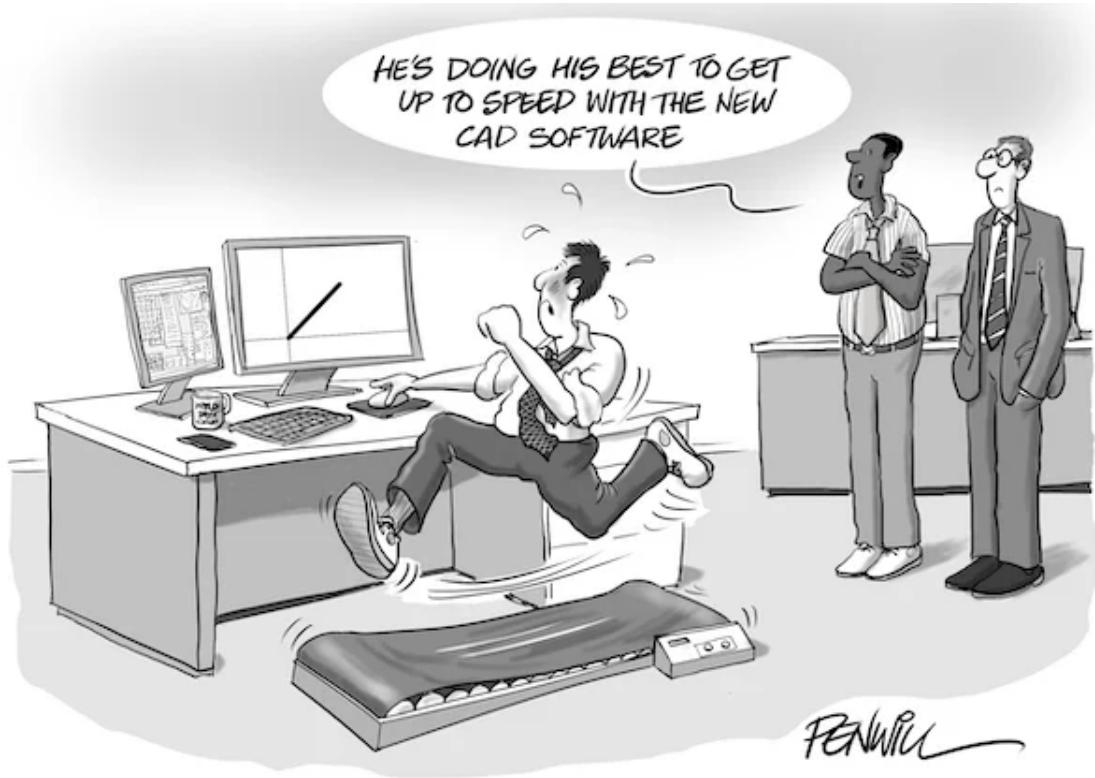
[Read more >>](#)

MCAD Solutions: MCAD in the Age of Artificial Intelligence

What does AI do for product design and engineering. *By Cadalyst Staff*

[Read more >>](#)

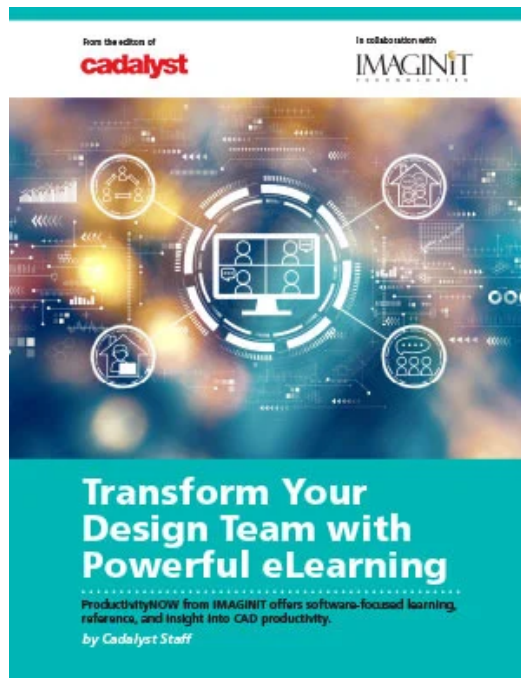
CAD Cartoon



By [Roger Penwill](#)

[Keep 'em Laughing!](#)

Free Resources



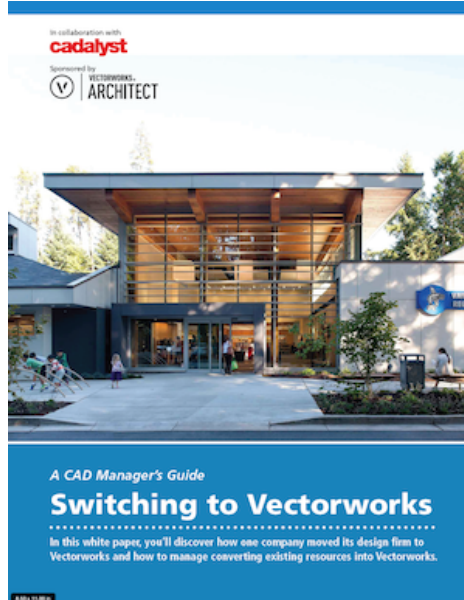
Transform Your Design Team with Powerful eLearning

Training your workforce continues to be one of the most important pillars to forming a strong and efficient team. The challenge becomes making sure your staff are using their design software to the best of their abilities and following your CAD

standards. How do you build this foundation and continue to invest in your employees?

Find out how ProductivityNOW from IMAGINiT offers you software-focused learning, reference, and insight into CAD productivity. *By Cadalyst Staff*

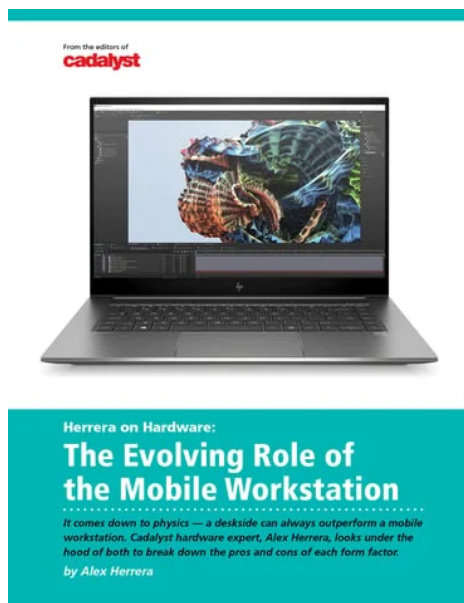
DOWNLOAD NOW



A CAD Manager's Guide to Switching to Vectorworks

Discover how one company moved its design firm to Vectorworks and how to manage converting existing resources into Vectorworks.

DOWNLOAD NOW



The Evolving Mobile Workstation

It comes down to physics — a desktide can always outperform a mobile workstation. Cadalyst hardware expert, Alex Herrera, looks under the hood of both

to break down the pros and cons of each form factor. For the bulk of CAD professionals, a mobile workstation makes the ideal complementary computing device. For some, it can suffice as the one and only workstation. *By Alex Herrera*

DOWNLOAD NOW

More Digital Design Solutions

Product Design

Building Design

Civil Engineering

Prototyping

Design Testing

Conceptual Design

Reality Capture

Drafting & 2D



Longitude Media, LLC, 8461 Lake Worth Road, Lake Worth, Florida 33467, USA

[Unsubscribe](#) [Manage preferences](#)