



Transform Your Factory!
Implement a digital MES and gain control over your factory floor!
DOWNLOAD NOW!

MES

cadalyst

In collaboration with
IMAGINiT
TECHNOLOGIES

cadalyst

Navigate the world of design technology



CAD Manager's Newsletter

STRATEGIES AND SOLUTIONS FOR THE REAL WORLD

By Robert Green

April 10, 2024
Issue #522

Do It Once! Training Made Simple

Get maximum training ROI with minimum effort.

I've noticed that over the past 5 years or so that training has become a very neglected topic. Of course, there is lip service paid to the concept of training, but when it comes time to spend money on, plan for, and conduct training, the true level of commitment is lacking. To be fair, it is harder to train people that are scattered in different offices as most work teams are today. So, what is the smartest way to approach training? In this edition of the *CAD Manager's Newsletter*, I'll share with you my very brief guide for conducting training that generates real productivity returns without costing a lot of time or money to get good results. Here goes.



Image source: [cacaroo/stock.adobe.com](https://www.adobe.com/stock/cacaroo/).

Use the ROI Mode of Thought

ROI — return on investment — doesn't just work for software and workstations, it works very well for training as well. Simply by striving to achieve the greatest return (time and cost savings reaped from training) with the minimum investment (cost to set up and deliver training), you can realize the greatest return.

The returns you'll reap from training are completing tasks faster than before and reducing the rates of error and rework, which saves your company money. Keep in mind that the investments associated with training are mainly the time you (as CAD manager) spend setting up training along with the time people spend sitting in training (while not being billable). When seen through these dual lenses of return and investment, training can be approached like any other project.

Solve Problems and Speed Up!

First, understand that minimizing the time investment given to training means that you must prioritize training topics so that you only provide training for topics that truly matter. The reality is that you can't train everyone on everything without spending a fortune. So, how do you set priorities that deliver the greatest return for the time invested? I find these classic metrics never go out of style:

- Does the training topic address a current problem?
- Will the training topic give users methods to achieve greater productivity?
- Will the training enhance best practices and standards thus reducing errors?

If you find a training topic that meets all — or at least two — of these criteria, then you have a winner. If you find a training topic that meets just one criterion, then it may not be important enough to train people on. And, anything that doesn't support these objectives shouldn't even be considered.

My goal when training is to make problems go away and make users faster — most times this includes some sort of standard or best practice component. My goal when training is not “to show cool features” or “have an open discussion,” but to achieve concrete results quickly without spending much time doing so.

Don't Aim for Perfection

Next, realize that great training means that you're delivering valuable information in a way that is easy to understand. It doesn't mean you need professionally designed graphics, glossy handouts, YouTube-worthy videos, or perfect standards manuals.

In fact, some of the best training sessions I've ever given were done with very basic course guide handouts and simple examples captured directly from my laptop and converted to simple videos. Conversely, some of the worst training sessions I've ever attended had great demos and wonderful course guides but the instructor couldn't communicate the information in an understandable way.

Now that you know what you should teach, it's time to make and present the materials. Find out how Robert Green develops and publishes training materials so they're available whenever needed, which ultimately frees up your time.

[<READ MORE >>](#)

Tools & Resources



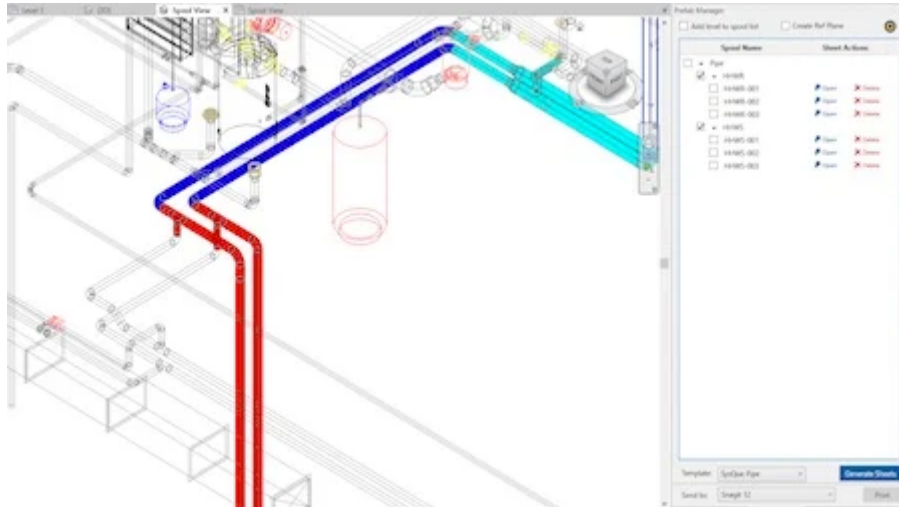
Sustainability: Carbon Analysis for Built Environment

Autodesk's Total Carbon Analysis for Architects for the AEC Collection offers new capabilities for carbon analysis that help track the carbon footprint of a building from planning through detailed design, according to the company. It includes Embodied Carbon Analysis in Autodesk Forma (currently in Tech Preview), which is supported by AI capabilities and enables architects to understand and test the carbon impact of their design decisions at the beginning of project planning. Also coming soon are new capabilities developed in Autodesk Insight, which measure carbon impacts from lighting, HVAC, architectural elements, building materials, and more. [Read more >>](#)

Subscription Model

Graphisoft announced that perpetual licenses will be gradually phased out by the end of 2025. This change won't affect the delivery of Software Service Agreement (SSA)/Forward subscription services to existing customers; they will be available for new customers through the end of 2024, and to existing customers through December 31, 2025. Starting in 2026, Archicad will be available only via subscription. Active SSA/Forward contracts will continue to be serviced beyond 2025. Alternatively, SSA/Forward customers can convert to Archicad Collaborate subscriptions at the same price as SSA/Forward. This offer is designed to help

existing SSA/Forward subscribers take full advantage of the Archicad Collaborate subscription, which combines Archicad for architectural design with BIMx and BIMcloud SaaS for secure, real-time access to shared projects, according to the company. [Read more >>](#)



Fabrication Tools for Revit

Trimble announced Fabrication SmartTools, a new drawing, routing, and fabrication toolkit built to amplify Fabrication Parts in Revit to save time and increase productivity for mechanical contractors, according to the company. Mechanical detailers can now design for coordination, planning, and fabrication with fewer steps by enabling users to automate manual and repetitive processes. In turn, they can model fully coordinated systems, assemblies, and fabrication spools. [Read more >>](#)

Reverse Engineering Webinar

FARO's Will Pitarello, Senior Applications Specialist and Greg George, Application Engineer Manager at Oqton, explain reverse engineering using 3D Metrology hardware and software to redesign a snowmobile windscreen. Plus, learn how to make modifications on components using 3D technology, discover the benefits 3D scanning and 3D printing technologies in iterating and manufacturing new parts. [Watch the webinar >>](#)

Nvidia's Ada Lovelace RTX GPUs

Nvidia announced six new NVIDIA RTX Ada Lovelace architecture GPUs for laptops and desktops, which enable creators, engineers, and data scientists to meet the demands of the new era of AI, design, and the metaverse, according to the company. Teaming the new Nvidia RTX GPUs with NVIDIA Omniverse, a platform for building and operating metaverse applications, designers can simulate concepts. For example, planners can visualize an entire factory before it is built and engineers can evaluate their designs in real time. The NVIDIA RTX 5000, RTX 4000, RTX 3500, RTX 3000, and RTX 2000 Ada Generation laptop GPUs deliver up to 2x the efficiency of the previous generation. For the desktop, the NVIDIA RTX 4000 Small Form Factor Ada Generation GPU features new RT Cores, Tensor Cores, and CUDA cores with 20GB of graphics memory. [Read More >>](#)

What's New at Cadalyst



Civil Solutions: Stormwater Management Steps Up

With extreme weather events impacting cities around the world and urban population growth contributing to increased flooding potential, the field of stormwater management has grown more complex. Find out how technology aids new approaches to predicting and managing flood events. *By Andrew G. Roe.* [Read more >>](#)

Can Digital Transformation Really Transform Your Business?

SPONSORED: In Part 1 of the series, "Can Digital Transformation Transform your Business?" we dig into how integrating digital technologies into your workflow offers an abundance of possibilities. *By Cadalyst Staff* [Read more >>](#)



MCAD Solutions: Redesigning Consumer Goods Packaging for Sustainability

Manufacturing moves towards eco-friendly packaging solutions answering consumers' demand for change and the need to save resources. *By Cadalyst Staff* [Read more >>](#)

CAD Cartoon



By [Roger Penwill](#)

[Keep 'em Laughing!](#)

A rectangular banner with a grey background. At the top, it says "Welcome to our new web site!". Below that is the word "cadalyst" in a large, bold, red, lowercase font. Underneath the logo, it says "Navigate the world of design technology" in a smaller, black font. At the bottom of the banner, it says "Everything you love about Cadalyst, all with a new look!" in a black font.

Free Resources



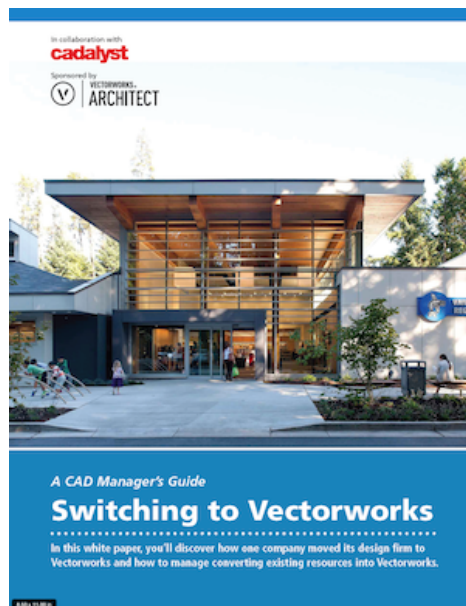
Digital Transformation in Manufacturing

Innovation within manufacturing helps create a culture of continuous improvement to improve product quality and reduce waste, ultimately making companies more successful.

Implementing a digital MES can help you drive innovation on your production floor.

Find out how a digital manufacturing execution system (MES) can transform your factory.

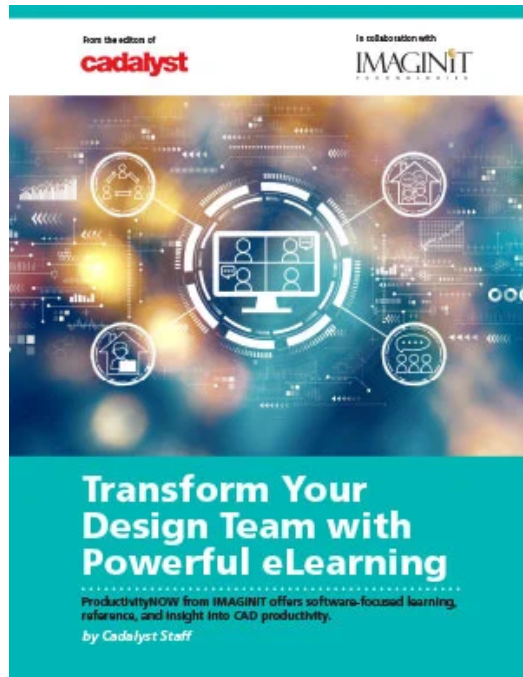
[DOWNLOAD NOW](#)



A CAD Manager's Guide to Switching to Vectorworks

Discover how one company moved its design firm to Vectorworks and how to manage converting existing resources into Vectorworks.

DOWNLOAD NOW



Transform Your Design Team with Powerful eLearning

Training your workforce continues to be one of the most important pillars to forming a strong and efficient team. The challenge becomes making sure your staff are using their design software to the best of their abilities and following your CAD standards. How do you build this foundation and continue to invest in your employees?

Find out how ProductivityNOW from IMAGINiT offers you software-focused learning, reference, and insight into CAD productivity. *By Cadalyst Staff*

DOWNLOAD NOW

More Digital Design Solutions

Product Design

Building Design

Civil Engineering

Prototyping

Design Testing

Conceptual Design

Reality Capture

Drafting & 2D



Longitude Media, LLC, PO Box 210824, Royal Palm Beach, Florida 33421, USA

[Unsubscribe](#) [Manage preferences](#)